



l'hermitage
Hôtel**** Lyon

*Your stays and events in an exceptional setting
high above the city of Lyon*

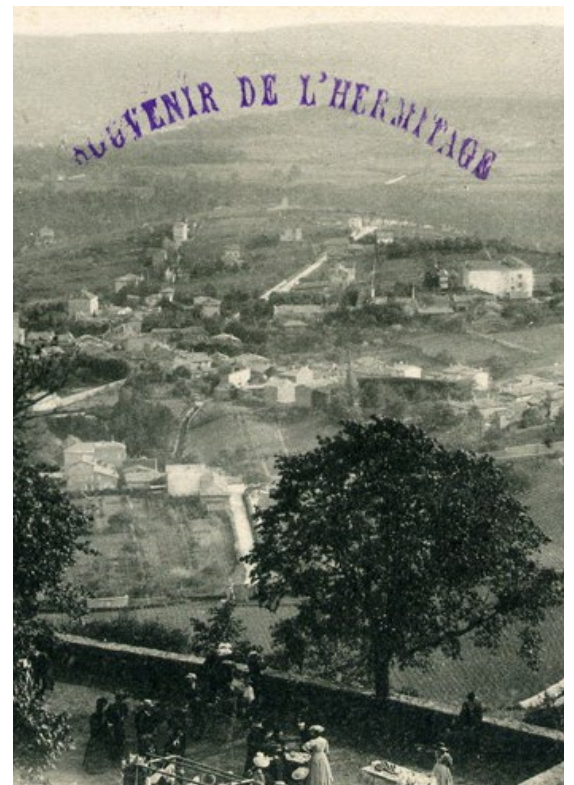
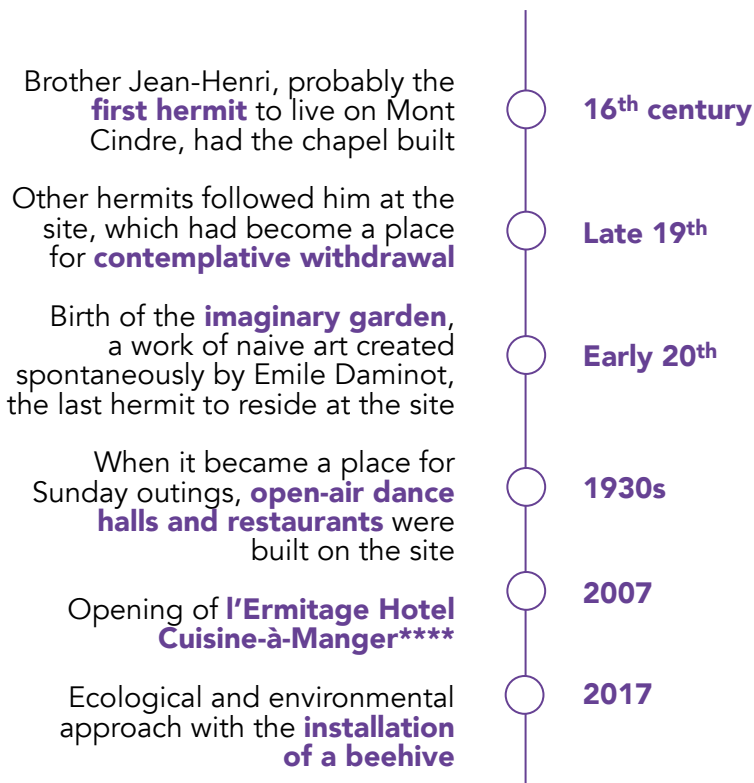
A BIT OF HISTORY



A FORMER PILGRIMAGE SITE

Up until the mid-twentieth century, a succession of hermits lived on Mont Cindre and forged the history of the site. **A pilgrimage site that became a place for contemplation**, it would later offer cafés and restaurants for the local population and for visitors who came to enjoy the exceptional view. An ever-changing panoramic landscape frames the passing days and the seasons.

In 2007, a new chapter opened for l'Ermitage, an old restaurant on Mont Cindre, and for the **èhôtels-Collection** Group. After offering a return to childhood with the Collège Hotel in 2003, creating **a place where guests can take time off to meditate and free themselves from everyday pressures** has become the hotel group's latest goal.



CONCEPT & STYLE

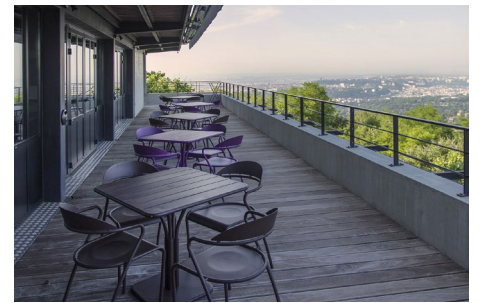
FINDING WELL-BEING TOGETHER

Nestled **high above Lyon** in a verdant setting with a **panoramic overview**, l'Ermitage Hotel pays tribute to the spirit of the place, where an **almost monastic sobriety** permeates the air. The choice of materials, the interior decoration and the flea-market

treasures (that recall the patina of the Collège Hotel) have been designed to preserve this **timeless atmosphere**.

"There is more to life than increasing its speed," said Gandhi. His comment on **slow living** inspired the theme of the

site, in the exceptional setting of Mont Cindre, where **serenity and contemplation** reign. L'Ermitage Hotel invites you to **replace "more" with "better"**: sleep better, eat better, work better and relax better. In sum, it's a place for "finding well-being together".



WHY YOUR BEST CHOICE IS L'ERMITAGE HOTEL CUISINE-À-MANGER

1

It's found in a luxuriant, greenery-filled setting with **terraces overlooking a panorama of Lyon**, just fifteen minutes from the city center.

2

There are **four event areas** bathed in natural daylight, including one with a panoramic terrace. **A home that can be adapted to your event is available for private use.**

3

Twenty-six rooms inspired by hermit cells are divided over three levels; most of them feature a panoramic view. **Parking** is free.

4

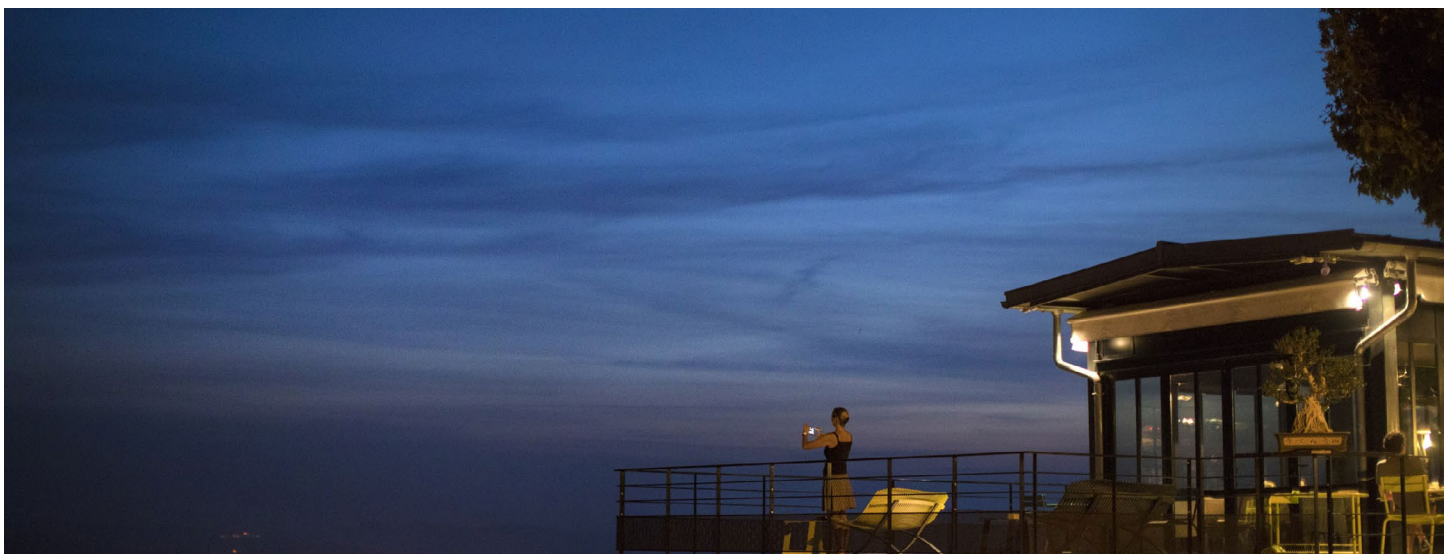
L'Ermitage Hotel features a **bistronomic** restaurant, the Cuisine-à-Manger. **Family-style local cuisine** is available at Là-Haut sur la Colline.

5

Your stay includes relaxing in a **well-being area** with breathtaking views and an indoor-outdoor heated swimming pool, Jacuzzi and sensory shower, as well as outdoor leisure activities with **terraces, lawn bowling and ping-pong.**

6

Enjoy **touristic activities and sports in the nearby area:** hermitage chapel, Imaginary Garden, typical cabornes, hiking and mountain bike trails.

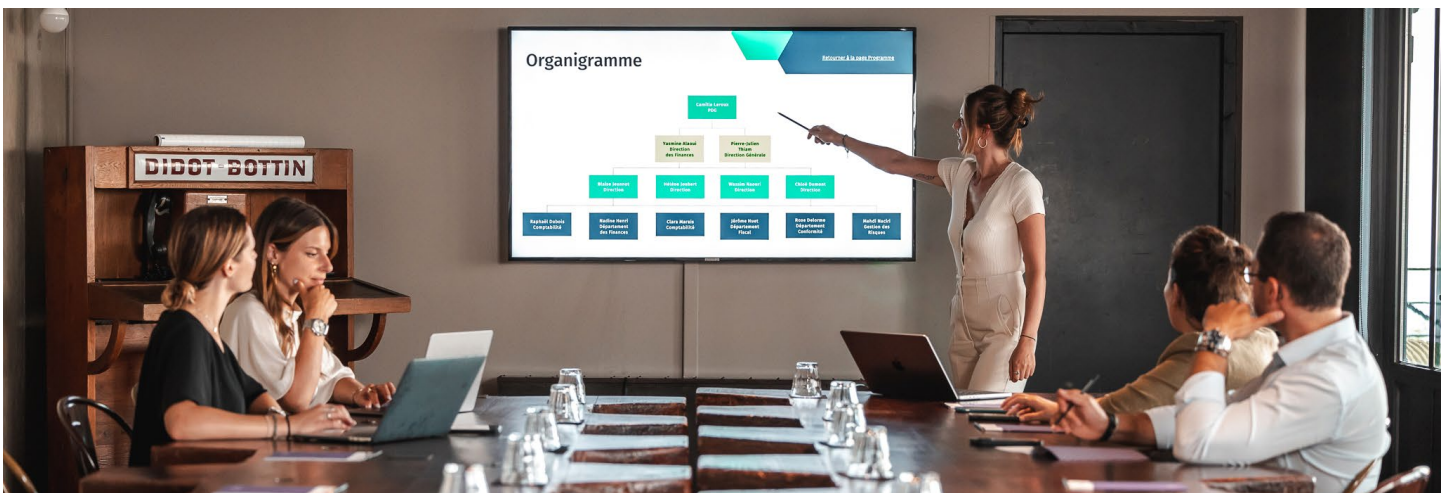
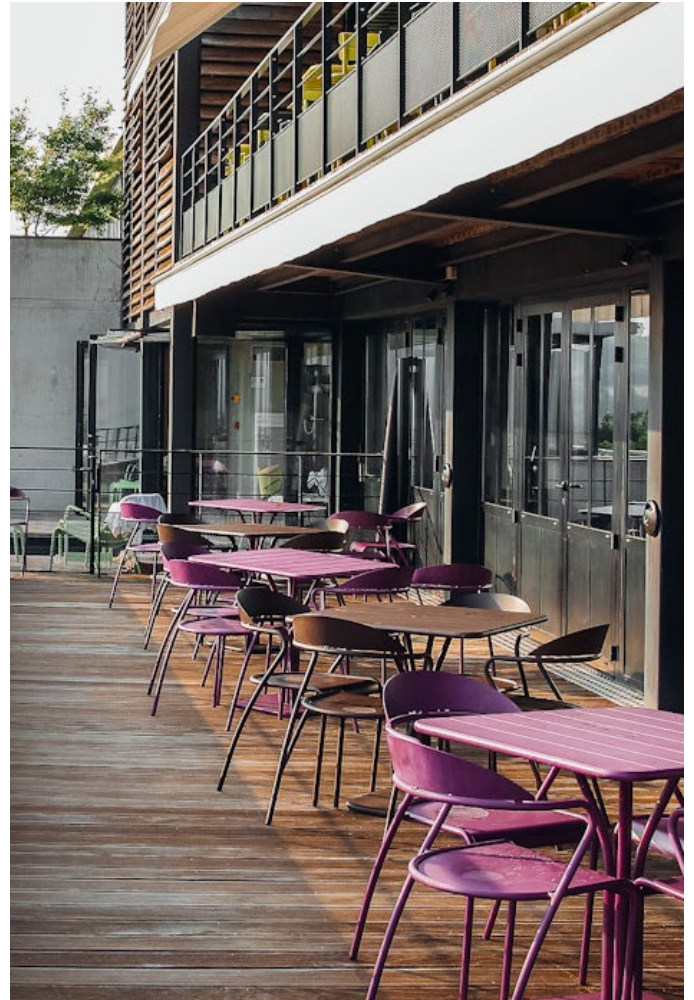


L'ATELIER

This spectacular **67 sqm** event room with **breathtaking views** of Lyon and the Monts lyonnais, l'Atelier is the place for exhibitions, celebrations and all types of family and festive events. A **panoramic terrace** can be reserved for private use and offers beautiful, **natural light** through large windows. Below, guests can **lawn bowl** facing the view.

The room's **unusual setting** and **intimate corners** add originality and conviviality to **your private events**. How about enjoying a drink as you watch the sky above Lyon turn orange and pink?

Capacity of **80 guests** for a cocktail and **50 guests** for a buffet.



WORKSHOP STARS

Furnished with immense jeweler's workbenches, l'Atelier has "in the back row of the classroom" (a knowing nod to Collège Hotel, the Group's first establishment) a trompe l'oeil installation of celebrities from the sixties, who watch over things with benevolence!

LA MAISON



A charming **132 sqm** residence next to l'Ermitage Hotel, La Maison is composed of a **large, fully equipped room** measuring 67 sqm and a **heated terrace-veranda with a bar** opening on a **closed 65 sqm garden** with rustic furnishings.

Decoration of the site and the musical background can be personalized. For **convivial relaxation** during your event, **outdoor activities** like lawn bowling or ping pong are available for your enjoyment.

Capacity of **80 guests** for a cocktail and **50 guests** for a buffet.



THE

Outdoor activities are possible when the weather is nice and an original Brazilian-style restaurant formula features roasted meat served on a sword, known as "rodizio".



EATING

Two restaurant formulas are available, depending on your needs and wishes:

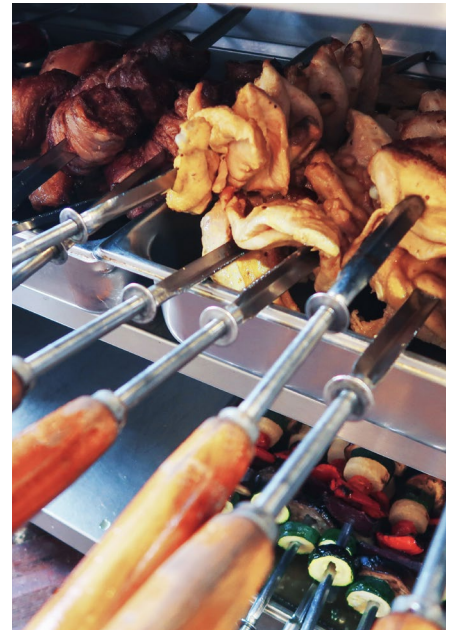
- **La Cuisine-à-manger**, a bistronomic menu loaded with inventive tastes
- **Là Haut sur la Colline**, a friendly, rustic restaurant proposing local gastronomic specialties

LA CUISINE-À-MANGER

Since the kitchen and dining room are contiguous, they create a friendly, relaxed atmosphere.

The restaurant's **bistronomic cuisine** recalls the legendary conviviality of Lyon-style hospitality.

Seasonal menus, fresh produce and homemade dishes are the ingredients behind a blend of **original tastes**. The terraces and glassed-in setting give a front-row view of the spectacle offered by the ever-changing **landscape**.



LÀ HAUT SUR LA COLLINE

Just steps from l'Ermitage Hotel, Là Haut sur la Colline proposes generous, family-style **traditional specialties**, where local products are the stars of the show.

Both small groups and large gatherings can enjoy their meal **by the fireside** in winter and **on the terraces and in the garden** in summer.

In this quaint restaurant with the feel of an inn, the only goal is enjoying the meal and the only duty is **remaining faithful to gastronomical tradition**.

SLEEPING

L'Ermitage Hotel has **26 rooms** decorated in a minimalistic style that recalls a hermit's cell, with **breathtaking views** of the Monts d'Or and the city of Lyon that encourage **contemplation**. On each door, a **thought** related to **time** calls for meditation.

Les Marronniers, spacious rooms overlooking the Chemin de l'Ermitage.

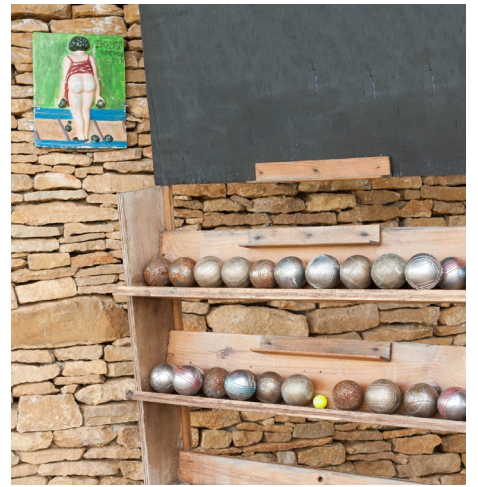
Les Contemplatives, rooms with panoramic views over Lyon and the Monts lyonnais.

L'Appartement, is made up of two rooms with sleeping arrangements for four, with panoramic views over Lyon and the Monts lyonnais and a desk area.

La Belvédère, is a unique corner room with a 180° view of Lyon and the Monts lyonnais; it includes a desk area..



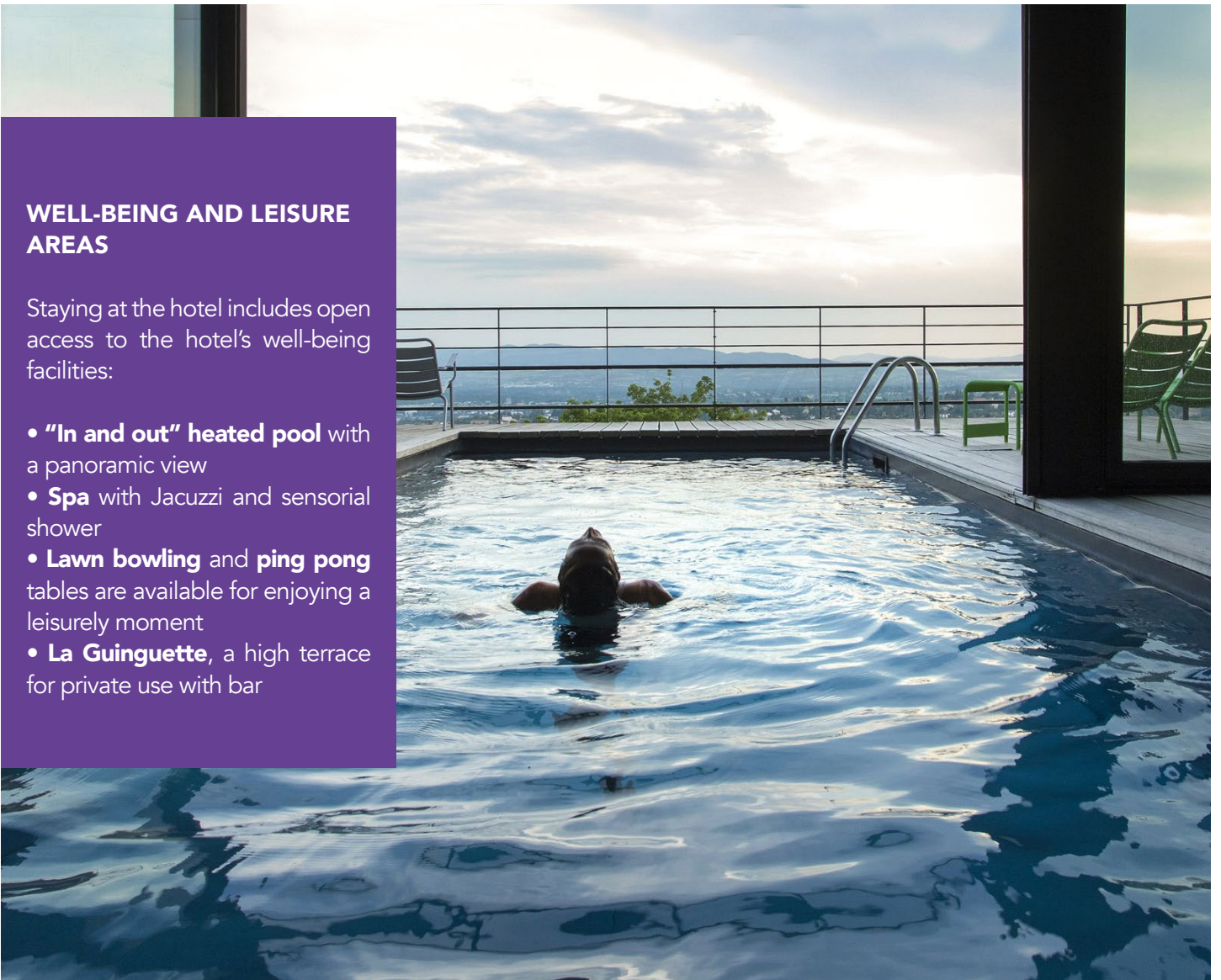
RELAXING



WELL-BEING AND LEISURE AREAS

Staying at the hotel includes open access to the hotel's well-being facilities:

- **"In and out" heated pool** with a panoramic view
- **Spa** with Jacuzzi and sensorial shower
- **Lawn bowling** and **ping pong** tables are available for enjoying a leisurely moment
- **La Guinguette**, a high terrace for private use with bar



TOURING

VISITING MONT CINDRE AND LYON

Since it is located in the heart of the Monts d'Or, Les Lanternes offers a number of nearby tourist possibilities, including **Mont Verdun**, the highest point in metropolitan Lyon; the **Hermitage Chapel** decorated with frescoes by Louis Touchage; **the cabornes**, which are former shepherds' huts in ochre-colored stones; the **Demeure du Chaos**; the **Museum of the painter Jean Couty**; and the **Saône Riverbanks** promenade, featuring marvelous viewpoints and 23 works of art.



A BROAD CHOICE OF ACTIVITIES

This is the way to personalize and promote your event.

Activities that are part of the hotel include **workshops, food and wine tasting, Lyon-style lawn bowling and ping pong.**

With our partners, discover **eco-responsible** activities and workshops, challenge your guests with an **escape game** or a **murder party** or explore the surrounding hills behind the wheel of a **2CV** car.



LES LANTERNES



At the heart of a **four-hectare natural park** next to L'Ermitage Hotel, Les Lanternes is nestled inside an **old farm with a new look**. The setting offers a sublime **natural environment** and breathtaking **views**. **"Be the architect of your event"** is the promise made at this site, which can be **fully reserved for private use**.

Discover **"La Longue Vue"**, an atypical one-piece room with an exceptional **40-meter length**

and **amazing views**, located over ten guest rooms, as well as the **"Caborne"** spa pool.


The pathway to the rooms leads on one end to an **enclosed garden** that has been equipped for outdoor screenings. Attached to this building is **"La Ferme"**, an entirely reinvented former home that features more intimate rooms, including **"Le Salon Cheminée"**, **"Le Salon Vaisselier"**, a kitchen and four additional rooms.

*Do you think big?
Discover Les
Lanternes!*



HOW TO GET HERE



 Chemin de l'Ermitage,
Saint-Cyr-au-Mont-d'Or

Nestled atop Mont Cindre, just few kilometers from the center of Lyon, L'Ermitage Hotel**** and the Cuisine-à-Manger restaurant offer breathtaking views.

Access by car or taxi is recommended and made easier with a private parking facility.

BY CAR

Address

Chemin de l'Ermitage
69450 Saint-Cyr au Mont d'Or

GPS coordinates

Latitude : E 4°49'10" Longitude : N 45°49'18"

Free parking nearby

FROM LYON ST EXUPÉRY AIRPORT

By taxi

Trip time: 45 minutes to an hour, depending on traffic

By Rhônexpress

Direct shuttle from Lyon Saint-Exupéry Airport to the Part Dieu train station (30 minutes)

BY PUBLIC TRANSPORTATION

By bus

Line 20
Every 20 minutes

Departure: Gare de Vaise stop
Arrival: Saint Cyr stop + 15 minutes on foot

FROM THE TGV STATIONS

Lyon Part-Dieu Train Station

By taxi: 40 min

Lyon Perrache Station

By taxi: 30 min

YOUR CONTACT



CLAUDIA BELLIA

COMMERCIAL SERVICE
commercial@lheritage-hotel.com

+33 4 72 19 69 69 | www.lheritage-hotel.com | contact@ermitage-college-hotel.com

[f](#) @ErmitageHotellLyon | [i](#) @ermitage_hotel



fourvière
Hôtel**** Lyon



collège
Hôtel**** Lyon



l'Ermitage
Hôtel**** Lyon



les lanternes
L'Ermitage Hôtel Lyon



l'eautel
Hôtel**** Toulon